

# the westin mumbai garden city

## hotel address

the westin mumbai garden city  
international business park, oberoi garden city  
goregaon (east), mumbai 400063. india  
t (91) 22 61470000 f (91) 22 61470101

Contact: westin.mumbaigardencity@westin.com  
www.westin.com/mumbaigardencity



## elevate your senses

Relax, revive and experience renewal at The Westin Mumbai Garden City.

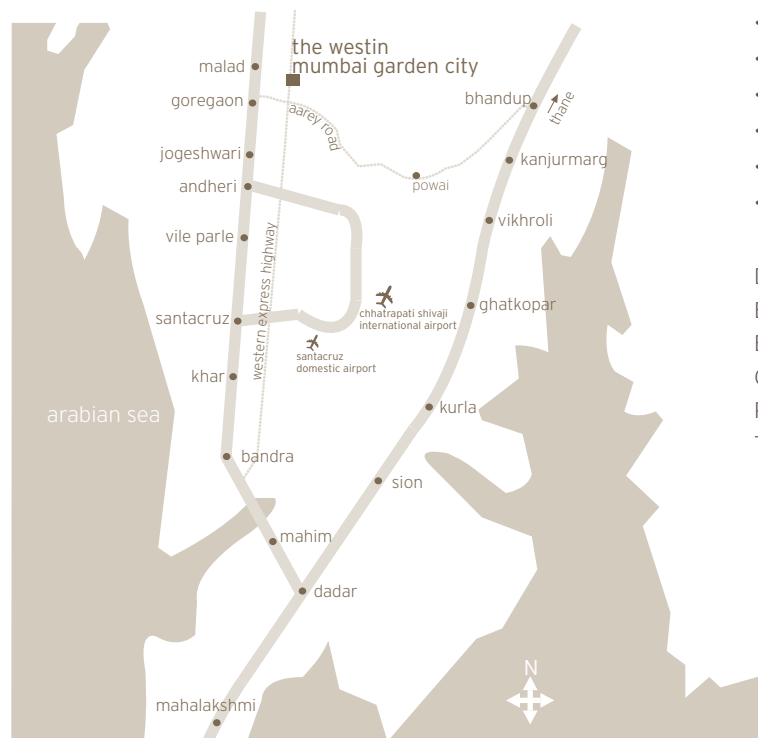
An inspired choice for both business and leisure travelers, with a conveniently accessible location on the Western Express highway, we are just a short drive from the airport and business districts. Adjacent to the city's premier shopping mall, our 32 floor tower is surrounded by lush tropical greenery. Unwind in our spacious guest rooms and inviting restaurants while our spa, outdoor pool and health club allow you to be at your best.

## guest accommodation

Escape to one of our 269 spacious, contemporary guest rooms and suites, located on levels 19 to 32, all offering floor to ceiling windows to provide natural light and stunning views. Our stylishly appointed rooms feature Westin's plush, all white signature Heavenly Bed and the rejuvenating Heavenly Bath with its fully customizable shower and bath, enhanced with a new range of spa bath amenities.

- High Speed Internet Access (HSIA)
- sleek work desk
- 2 telephones with dual lines and voice mail system
- 46 inch LCD screen television
- DVD player
- coffee and tea making facilities
- refreshment center
- in-room safe
- iron and ironing board

DELUXE	160	42 -48 sqm
EXECUTIVE CLUB	85	42 -48 sqm
EXECUTIVE SUITE	22	103 sqm
CHAIRMAN'S SUITE	1	148 sqm
PRESIDENTIAL SUITE	1	230 sqm
TOTAL	269	



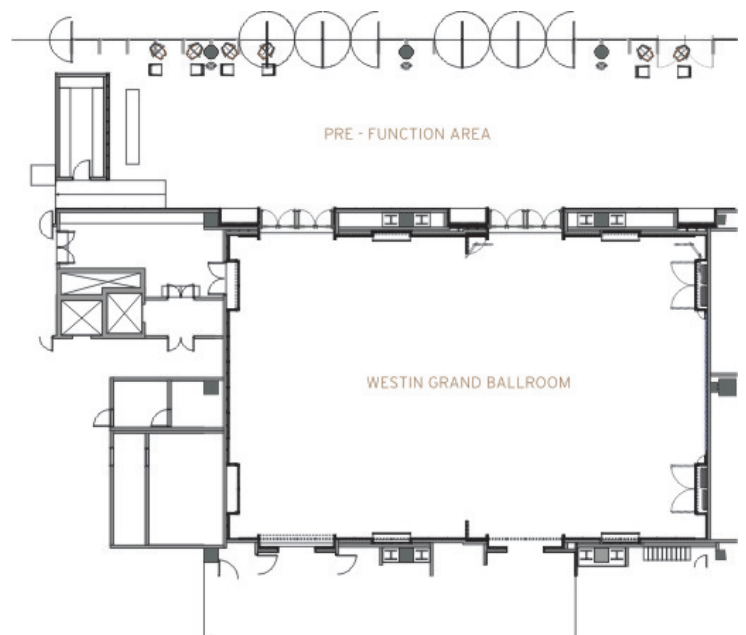
## facilities and services

- Westin Service Express: Just one call to take care of all hotel services and guest requests.
- Business Center: Fully equipped and modern, offering a wide range of services.
- Wireless internet access in all meeting rooms and public areas.
- Heavenly Spa by Westin™: Enjoy an array of personalized treatments; pamper yourself in the steam room or relax in the pool or whirlpool.
- Westin WORKOUT: A modern and fully equipped fitness facility.
- Kids Club: To take care of our younger guests with entertaining and educational activities.

## meeting and catering

Experience total renewal and create lasting memories with an event at The Westin Mumbai Garden City. Over 900 square meters of meeting and function space, latest audio visual technology, custom designed menus and Westin's personal and instinctive service, will enable us to tailor any event to your specific needs.

## floor plans and capacity chart



## capacity chart

MEETING ROOM	TOTAL AREA (SQ M)	L (M)	W (M)	H(M)	TOTAL AREA (SQ FT)	L (FT)	W (FT)	H(FT)	BANQUET	CLASSROOM	THEATRE	RECEPTION	U-SHAPE	Cluster
Westin Grand Ballroom	425	25.9	16.4	5.5	4575	85	54	18	200	180	370	400	60	170
Westin I	211.5	12.9	16.4	5.5	2276	42	54	18	90	90	130	150	30	80
Westin II	211.5	12.9	16.4	5.5	2276	42	54	18	90	90	130	150	30	80
Pre-Function-Area	166	-	-	3.2	1787	100	29	10.5	-	-	-	-	-	-
Westin Gardens	832	-	-	-	8961	-	-	-	300	-	400	400	-	250
Chafa	64	10.3	6.2	3	689	34	20	9.1	40	24	50	50	20	24
Chafa I	36	5.8	6.2	3	387	19	20	9.1	20	12	20	0	12	-
Chafa II	28	4.4	6.2	3	301	14.4	20	9.1	10	-	20	0	8	-
Taman	64	10.3	6.2	3	689	34	20	9.1	40	24	50	50	20	24
Taman I	36	5.8	6.2	3	387	19	20	9.1	20	12	20	0	12	-
Taman II	28	4.4	6.2	3	301	14.4	20	9.1	10	-	20	-	8	-
Mogra	64	10.3	6.2	3	689	34	20	9.1	40	24	50	50	20	24
Mogra I	36	5.8	6.2	3	387	19	20	9.1	20	12	20	0	12	-
Mogra II	28	4.4	6.2	3	301	14.4	20	9.1	10	-	20	-	8	-
The Boardroom	53	8.5	6.2	2.8	570	28	20	9.2	-	-	-	-	14	-
Executive 1,2,3,4	24	5.8	4.2	2.8	258	19	14	9.2	-	-	-	-	8	-

## dining and entertainment

Indulge your culinary senses at our innovative restaurants, each one offering you a unique dining experience.

Prego - already an institution internationally, is a casual Italian restaurant with a lively atmosphere.

Seasonal Tastes - all day dining restaurant offering modern Asian and International cuisine with show kitchens.

Kangan - A chic Indian restaurant with an open tandoor.

Eighteen the Lounge - A stylish lounge and bar, ideal to unwind and catch up with friends over coffee or cocktails.

Splash - our poolside bar and restaurant, is an oasis to relax and enjoy with family or business associates.

In Room Dining - available 24hrs for our guests' convenience.

The Westin Mumbai Garden City is proud to offer SuperFoodsRx™ among its culinary offerings; proven to nourish and replenish your body.